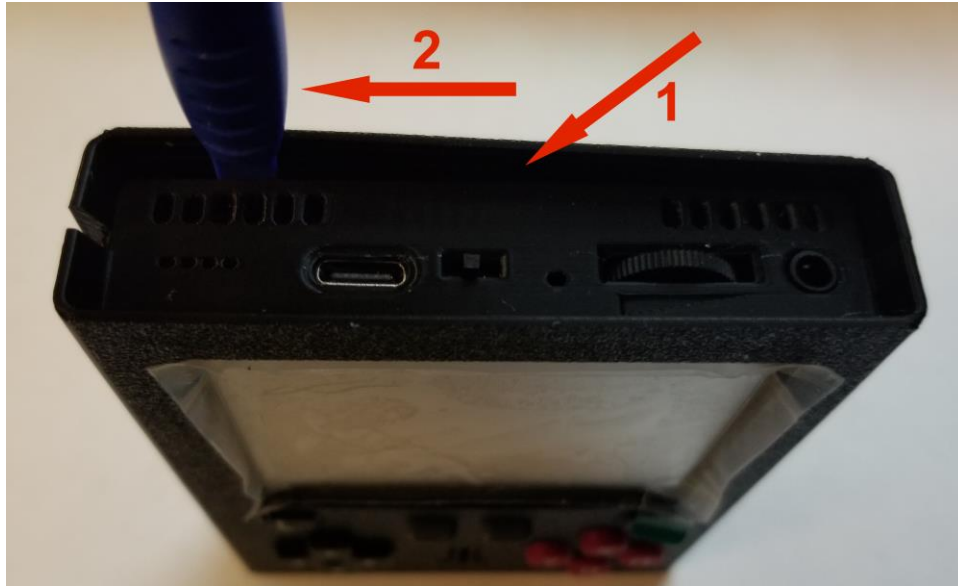


Retro Cartridge

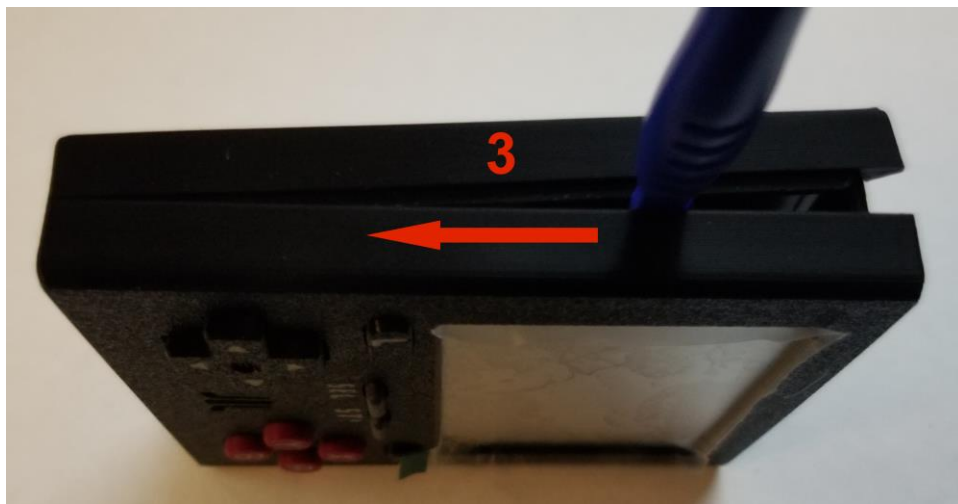
Safe Opening Instructions

1. At the top of the device, lift up one corner above the vents.
 - a. It's often possible to open it with just your fingers, depending on how tightly the two halves of the shell fit together.
 - b. If you need some help, slide a plastic tool or flathead screwdriver into the gap above the power switch, and then gently slide to one side.



- c. If both of the top corners lift up, press one of them back down.

2. Next, switch to the open side and gently extend the opening all the way to the bottom end of the device.



Retro Cartridge

Safe Opening Instructions

3. Finally, fold the rear cover back to release it along the bottom of the device.



4. That's it! The other side should slip right out, exposing the device internals.

